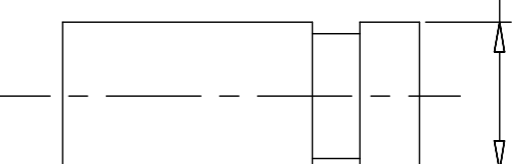
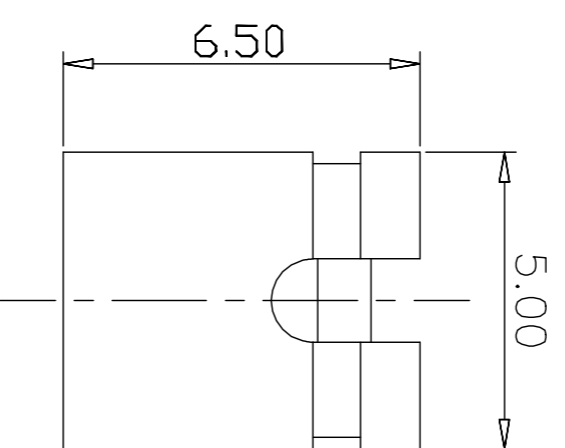
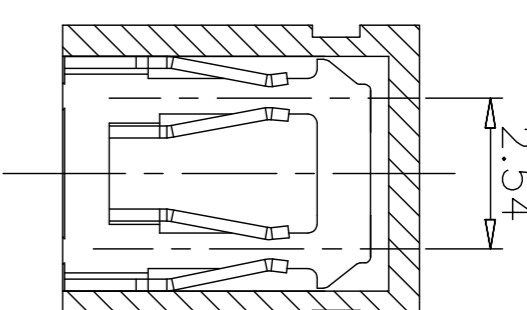


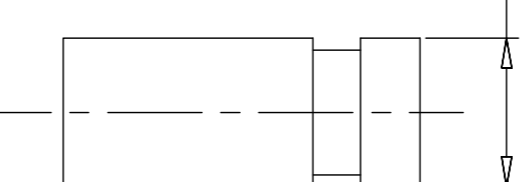
2.50



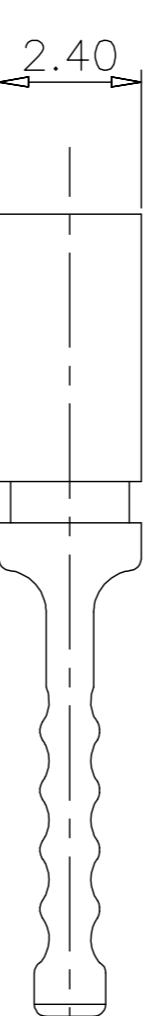
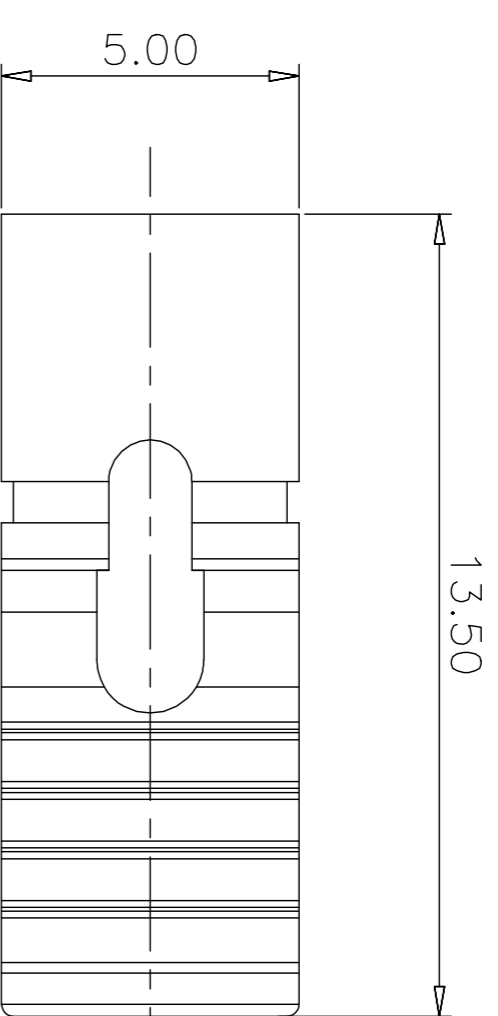
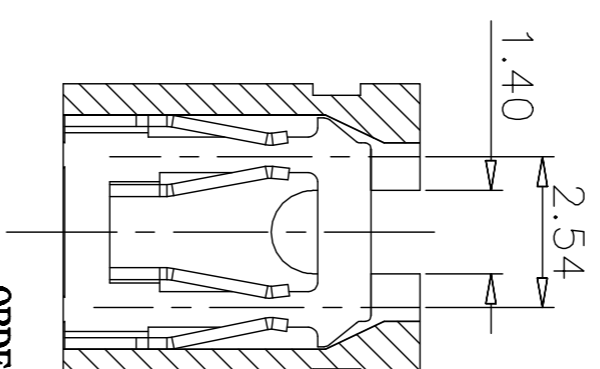
CLOSE TYPE



2.50



OPEN TYPE



LONG TYPE

ORDER INFORMATION

Z B 1 0 0 9 - X

X X

X

SERIES NO

No. OF CONTACTS
2PIN

HOUSING TYPE
D: OPEN
C: CLOSE
L: LONG

HOUSING COLOR
B: BLACK R: RED
Y: YELLOW L: BLUE
W: WHITE G: GREEN

CONTACT PLATING
2: FULL NICKEL
4: GOLD+NICKEL

NOTES:

1. SPECIFICATION:

- 1.1 CONTACT RESISTANCE: 30mΩ MAX.
- 1.2 DIELECTRIC WITHSTANDING VOLTAGE: 500V AC(rms) FOR 1 MINUTE.
- 1.3 INSULATION RESISTANCE: 500MΩ Min.
- 1.4 OPERATING TEMPERATURE: -40°C~+105°C.
- 1.5 CURRENT RATING:3A.
- 1.6 VOLTAGE RATING:250V.

MINI JUMPER PITCH 2.54mm TYPE

ITEM	NAME OF PART	NO. OF PART	Q'TY	MATERIAL	NOTE
DWG	SK	DATE 2018-5-25	SIZE A4	UNITS	1/1
CHK		DATE	UNITS	MM	SCALE
APP		DATE			



NINGBO ZHONGBA PHOTOVOLTAIC TECHNOLOGY CO.,LTD

DWGNO

ZB1009-XXP